

# Waveguide to Coaxial Adaptor

EIA / IEC



## PRODUCT FEATURES

- High quality low-loss aluminium alloy
- Can be optimised for customer frequency
- Customised length
- Standards, RS-271-A, RS-261, IEC 60154-2, IEC 60153-1, 2, MIL-DTL-85K, MIL-DTL-3922D



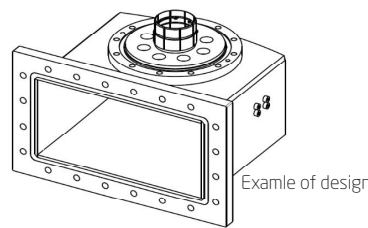
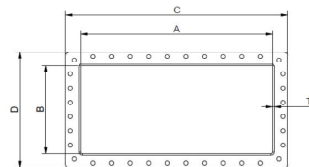
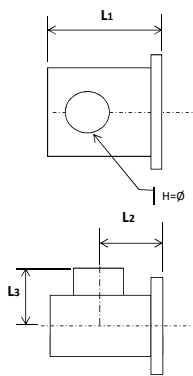
## PRODUCT PROFILE

Exir Broadcasting supplies Waveguide lines of different types. Low-loss aluminium alloys are used to ensure high conductivity.

Exir Broadcastings waveguides fulfill all general standards. It's welded in a four-corner welding process with no welding in direction of propagation which yield excellent performance and minimise loss.

All adaptors can be combined with standard coaxial adaptor to flange all the way down to N-type connector.

More detailed information is available on request.



## ARTICLE STRUCTURE: WR2300-618F-A

- WR = Rigid type
- 2300 = Size of line
- 618F = Coaxial size and type
- A = Version

ARTICLE	WR2300-xxxx-A	WR23HH-xxxx-A	WR1800-xxxx-A	WR1500-xxxx-A	WR1150-xxxx-A	OPTIONS
TYPE OF LINE	WR2300	WR2300 Half Height	WR1800	WR1500	WR1150	
FREQUENCY	320 - 490 MHz	320 - 490 MHz	410 - 620 MHz	490 - 750 MHz	670 - 880 MHz	
RETURN LOSS (VSWR)	>26 dB (<1.10)	>26 dB (<1.10)	>26 dB (<1.10)	>26 dB (<1.10)	>26 dB (<1.10)	>32 dB (<1.05) @10% bandwidth
MAX POWER RATING	Limited by the specification of coaxial connection					
H	6 1/8"	6 1/8"	6 1/8"	6 1/8"	6 1/8"	Coaxial adapter to fit connection requirements (e.g. 7/16 or N)
L1	500 mm	500 mm	450 mm	350 mm	275 mm	
A	584.2 mm	584.2 mm	457.2 mm	381.0 mm	292.1 mm	
B	292.1 mm	146.1 mm	228.6 mm	190.5 mm	146.0 mm	
C	676.2 mm	676.2 mm	546.1 mm	469.9 mm	381.0 mm	
D	384.2 mm	238.1 mm	317.5 mm	279.4 mm	235.0 mm	
T	5 mm	5 mm	5 mm	5 mm	5 mm	
WEIGHT	27kg	22.5kg	20kg	19kg	8.6kg	
MATERIAL	6082	6082	6082	6082	6082	Other on request
COLOUR	Frosted black	Frosted black	Frosted black	Frosted black	Frosted black	Other on request