

# Waveguide Elbow

EIA / IEC

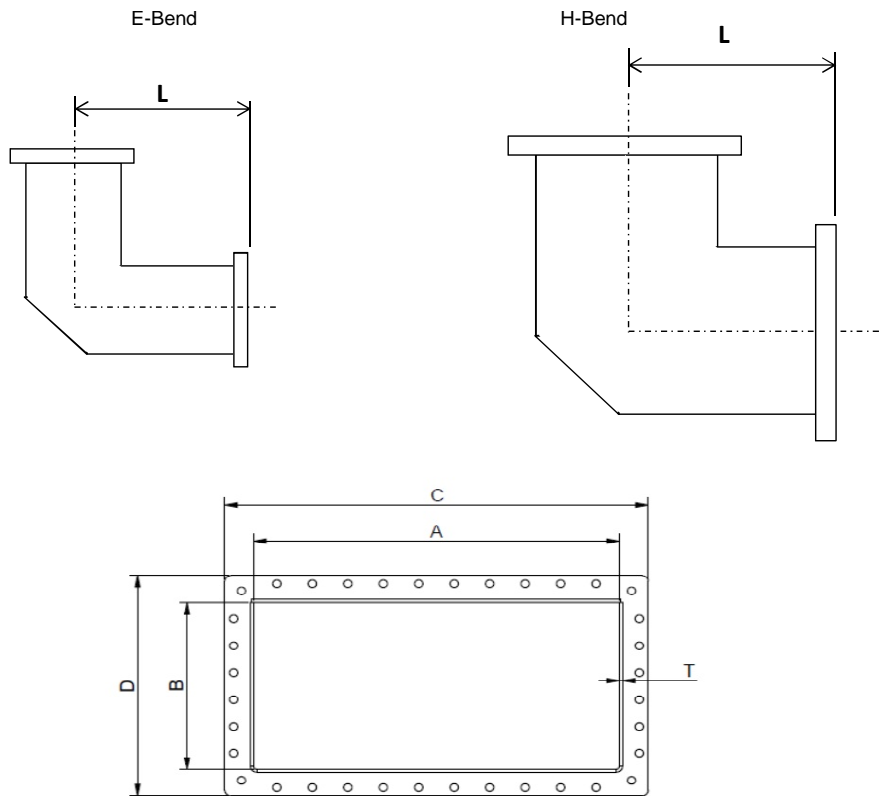


## PRODUCT FEATURES

- Customised length
- Low Loss aluminium alloy
- Can be optimised for customer freq
- Standards, RS-271-A, RS-261, IEC 60154-2, IEC 60153-1, 2, MIL-DTL-85K, MIL-DTL-3922D

## PRODUCT PROFILE

Exir Broadcastings waveguides fulfill all general standards, Its welded in a two-corner welding process, with no welding in Direction of propagation which yield excellent performance and minimise loss.



## TYPICAL DATA EIA / IEC

	WR2300	WR2300 Half Hight	WR1150	OPTIONAL
ART. NO. E-Bend	WR2300-EB-A	WR23HH-EB-A	WR1150-EB-A	
ART. NO. H-Bend	WR2300-HB-A	WR23HH-HB-A	WR1150-HB-A	
FREQUENCY	320-490 MHz	320-490 MHz	640-980 MHz	
RETURN LOSS (VSWR)	>32 dB (<1.05)	>32 dB (<1.05)	>32 dB (<1.05)	>40 dB (<1.02) 10% band-Width
INSERTION LOSS @ 100m min/max Freq	<0,089 dB/ <0,13 dB	<0,18 dB/ <0,26 dB	<0,25 dB/ <0,37 dB	
MAX INPUT POWER RATING @ min/max Freq	348/246 MW pp	130/90 MW pp	87/61 MW pp	
LENGTH L, [mm] E-Bend	400	400	250	Customised length on request
LENGTH L, [mm] H-Bend	500	500	350	Customised length on request
DIMENSION A x B [mm]	584,2±0.4 x 292,1±0.4	584,2±0.4 x 146,05±0.4	292,1±0.3 x 146,04±0.3	
DIMENSION C x D [mm]	676,24±0.4 x 384,16±0.4	676,24±0.4 x 238,11±0.4	381±0.3 x 234,96±0.3	
DIMENSION T [mm]	5	5	5	
WEIGHT	27kg	22,5kg	13,5kg	
MATERIAL	1050A-H14 Low loss	1050A-H14 Low loss	6060	6082, 6063, 6061, 6060, Other on request
COLOUR	-	-	-	Frosted black, Other on request