

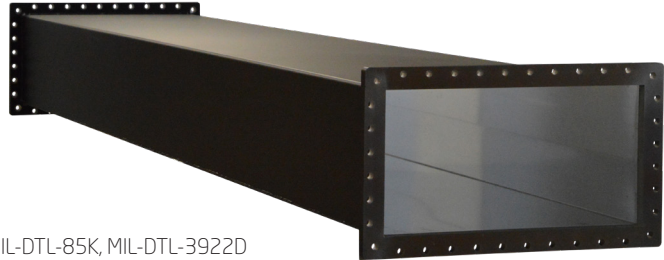
Waveguide Rigid

EIA / IEC



PRODUCT FEATURES

- High quality low-loss aluminium alloy
- Can be optimised for customer frequency
- Customised length
- Standards, RS-271-A, RS-261, IEC 60154-2, IEC 60153-1, 2, MIL-DTL-85K, MIL-DTL-3922D

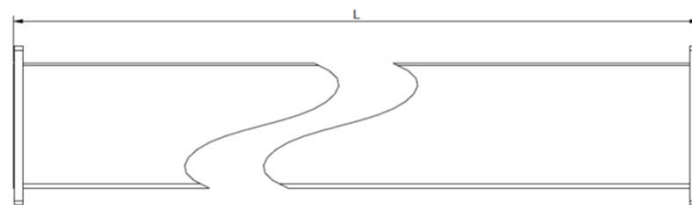
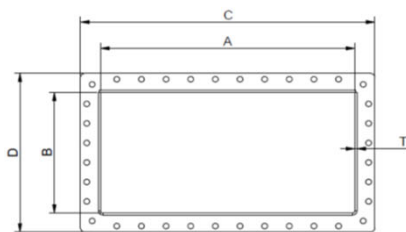


PRODUCT PROFILE

Exir Broadcasting supplies Waveguide lines of different types. Low-loss aluminium alloys are used to ensure high conductivity.

Exir Broadcastings waveguides fulfill all general standards. It's welded in a two-corner welding process with no welding in direction of propagation which yield excellent performance and minimise loss.

More detailed information is available on request.



ARTICLE: WR2300-R-3000-A

- WR = Rigid type
- 2300 = Size of line
- R = Straight line type
- 3000 = Length of line
- A = Version

ARTICLE	WR2300-R-xxxx-A	WR23HH-R-xxxx-A	WR1500-R-xxxx-A	WR1150-R-xxxx-A	
TYPE OF LINE	WR2300	WR2300 Half Height	WR1500	WR1150	OPTIONS
FREQUENCY	320 - 490 MHz	320 - 490 MHz	490 - 750 MHz	640 - 980 MHz	
RETURN LOSS (VSWR)	>32 dB (<1.05)	>32 dB (<1.05)	>32 dB (<1.05)	>32 dB (<1.05)	>40 dB (<1.02) @10% bandwidth
INSERTION LOSS @ 100m Min/max freq.	<0,089 / <0,13 dB	<0,18 / <0,26 dB	<0,25 / <0,35 dB	<0,25 / <0,37 dB	
MAX POWER RATING @ min/max Freq.	348 / 246 MW pp	130 / 90 MW pp	148 / 104 MW pp	87 / 61 MW pp	
A	584.2 mm	584.2 mm	381.0 mm	292.1 mm	
B	292.1 mm	146.1 mm	190.5 mm	146.0 mm	
C	676.2 mm	676.2 mm	469.9 mm	381.0 mm	
D	384.2 mm	238.1 mm	279.4 mm	235.0 mm	
T	5 mm	5 mm	5 mm	5 mm	
WEIGHT 1m / 3m	27kg / 80kg	22.5kg / 66.5kg	16.5kg / 48kg	13.5kg / 40kg	
MATERIAL	6082-T6	6082-T6	6082-T6	6082-T6	Other on request
COLOUR	Frosted black	Frosted black	Frosted black	Frosted black	Other on request